

Marcella

COLLECTION

by MILLER at WORK





Spring

The **Standard Spring** chair is stocked in all black mesh with a polished aluminum base and back detail.

Optional headrest available. **Special order** mesh/fabric and plastic frame colors are available, lead times may vary.



SPM01-IW01, SPM02-IW03-FA03-AB-G, SPM01-FA04-AB-B, SPM02-IW04-AB-G, SPM01-L03-AB-B, SPM02-FA06-AB-G

Spark

The **Standard Spark** chair is stocked in black mesh back, black fabric seat, black plastic base and polished aluminum arm detail. **Optional** headrest and polished aluminum base available. **Special order** mesh/fabric and plastic frame colors are available, lead times may vary.



SKM02-IW01-FA01, SKM02-FA03-AB-G, SKM02-IW01-BB-B, SKM01-FA04-BB-B, SKM02-IW02-AB-B, SKM02-FA06-GB-G

Adjustment Controls



adjustable headrest,
field installable



pneumatic height
adjustment



sliding seat
adjustment



tension control



tilt lock control



adjustable lumbar
support



horizontal/vertical
adjustable "T" arms

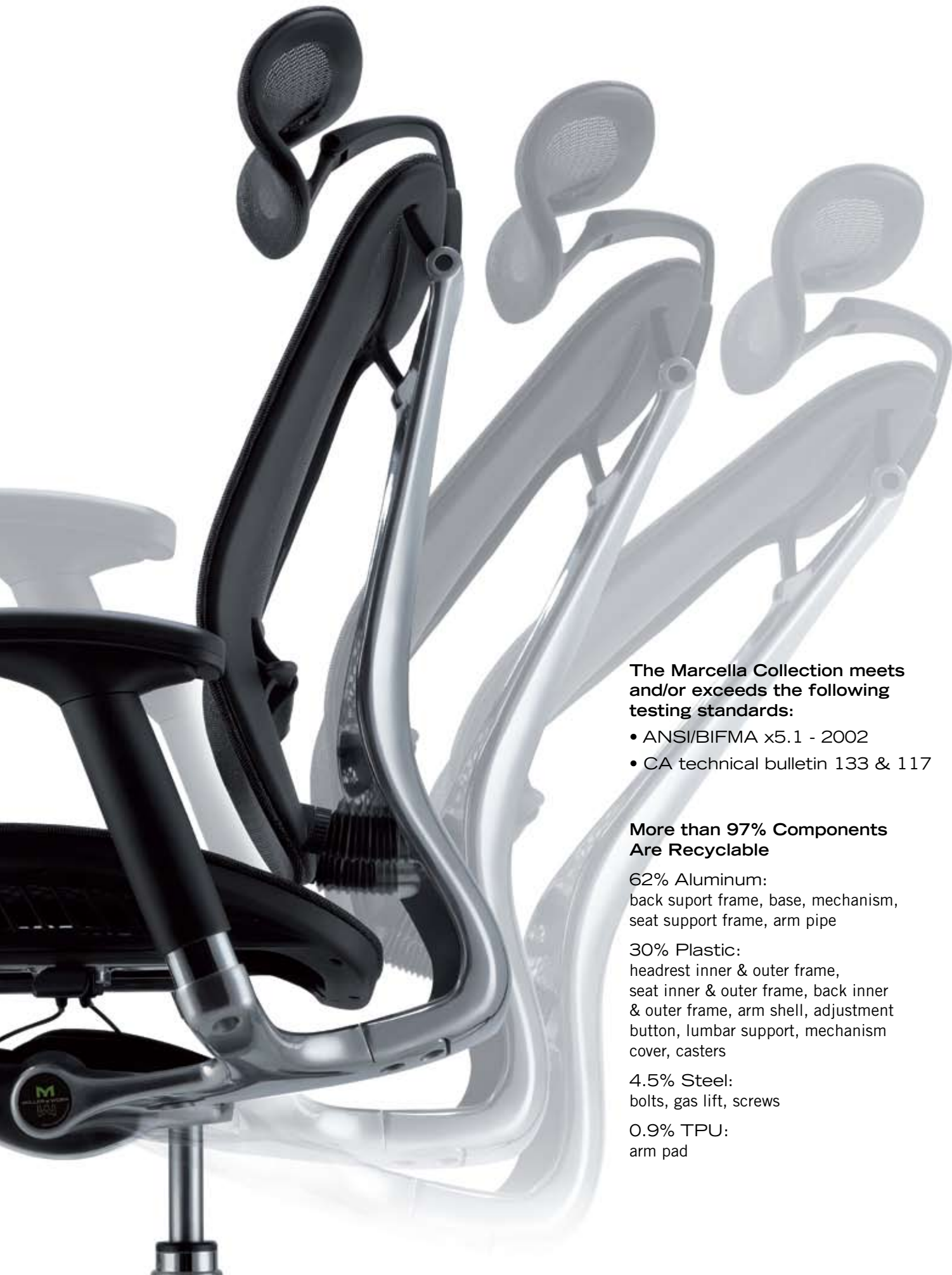


rotating and width
adjustable "T" arms

Model Number Composition

Chair	Model	All Over Material Or Back Material	Seat Material <i>Only include if different from back. List 2nd.</i>	Base	Plastic
SP Spring chair SK Spark chair	M01 w/headrest M02 w/out headrest	IW01-07 selections FA01-07 selections Y01-07 selections L01-07 selections	IW01-07 selections FA01-07 selections Y01-07 selections L01-07 selections	BB black base GB grey base AB aluminum base	B black plastic G grey plastic





The Marcella Collection meets and/or exceeds the following testing standards:

- ANSI/BIFMA x5.1 - 2002
- CA technical bulletin 133 & 117

More than 97% Components Are Recyclable

62% Aluminum:
back support frame, base, mechanism,
seat support frame, arm pipe

30% Plastic:
headrest inner & outer frame,
seat inner & outer frame, back inner
& outer frame, arm shell, adjustment
button, lumbar support, mechanism
cover, casters

4.5% Steel:
bolts, gas lift, screws

0.9% TPU:
arm pad

IW Mesh (BLACK IW-MESH IS STANDARD ON ALL MODELS, ALL IW-MESH COLORS SPECIAL ORDER)



IW01
black



IW02
white



IW03
orange



IW04
blue



IW05
green



IW06
red



IW07
grey

Fabric (BLACK FABRIC SEAT STD ON SPARK ONLY, ALL FABRICS SPECIAL ORDER)



FA01
black



FA02
beige



FA03
orange



FA04
blue



FA05
lime

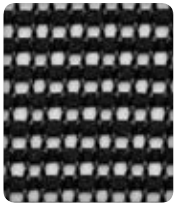


FA06
red



FA07
grey

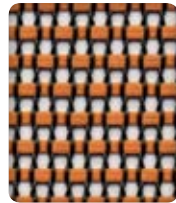
Y Mesh (ALL Y-MESH SPECIAL ORDER)



Y01
black



Y02
berry



Y03
orange



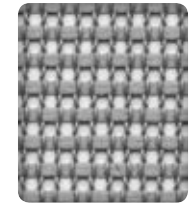
Y04
blue



Y05
lime



Y06
red



Y07
grey

Leather (ALL LEATHER SPECIAL ORDER)



L01
black



L03
cream



L06
brown



L07
coffee

Plastic (BLACK STANDARD, GREY SPECIAL ORDER)



B
black



G
grey

Base Options



- standard for Spark

- optional for Spring
- optional for Spark

- standard for Spring
- optional for Spark

BB
black base

GB
grey base

AB
aluminum base

STD Spring Chair:

SPM02-IW01
Black IW-mesh back & seat
Polished aluminum base
Black plastic

Capacity:
Spring: 350 lbs.
Spark: 250 lbs.

Warranty:
5 year

STD Spark Chair:

SKM02-IW01-FA01
Black IW-mesh back & black fabric seat
Black plastic base & frame
Polished aluminum arm accents

STD Dimensions for Spring and Spark

W	D	H	H w/hdrst	AW	SW	SD	SH
27.5"	23.7"-29.1"	39"-43"	44"-50"	25"-26"	21.5"	16.4"-18.8"	16.5"-21.5"