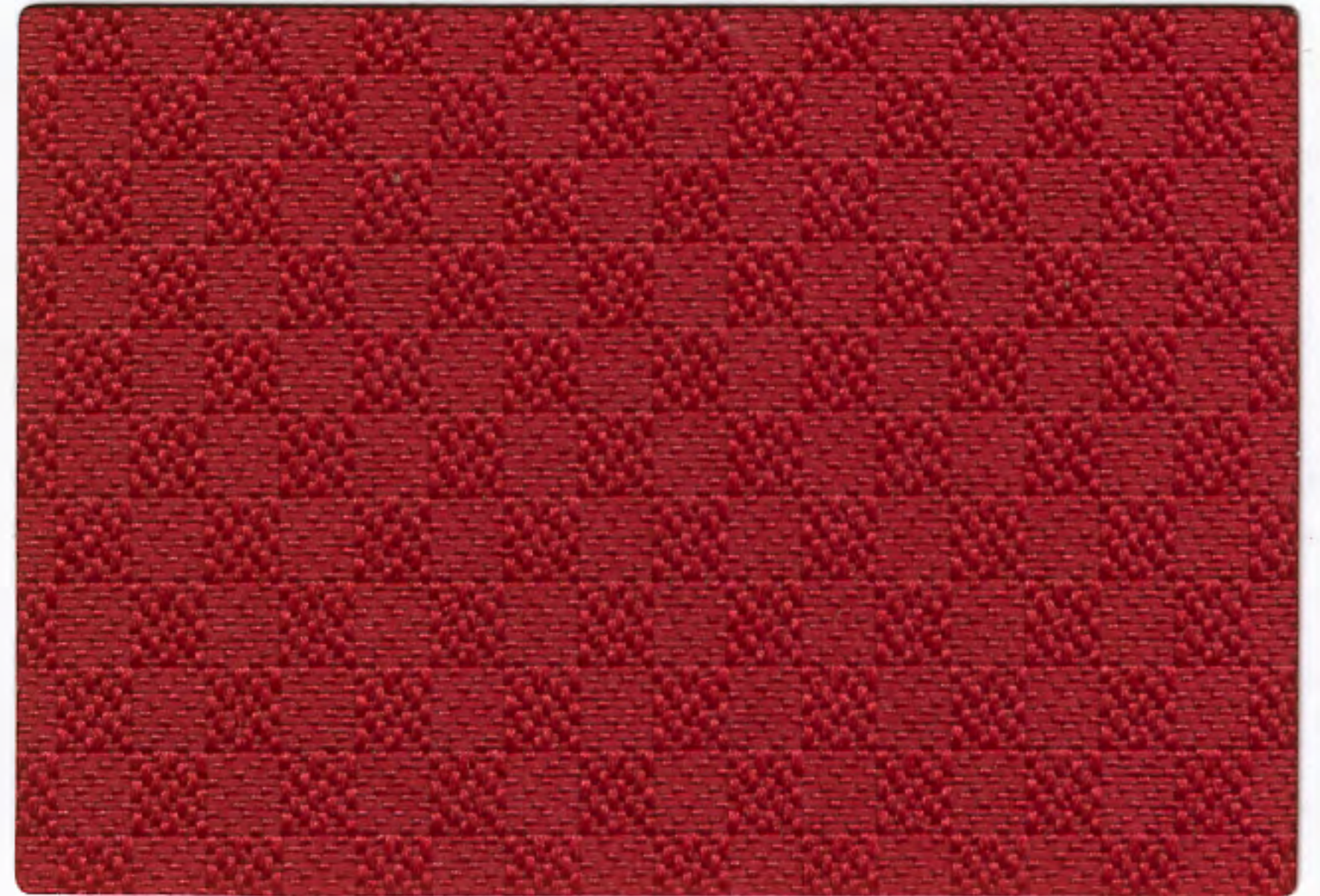
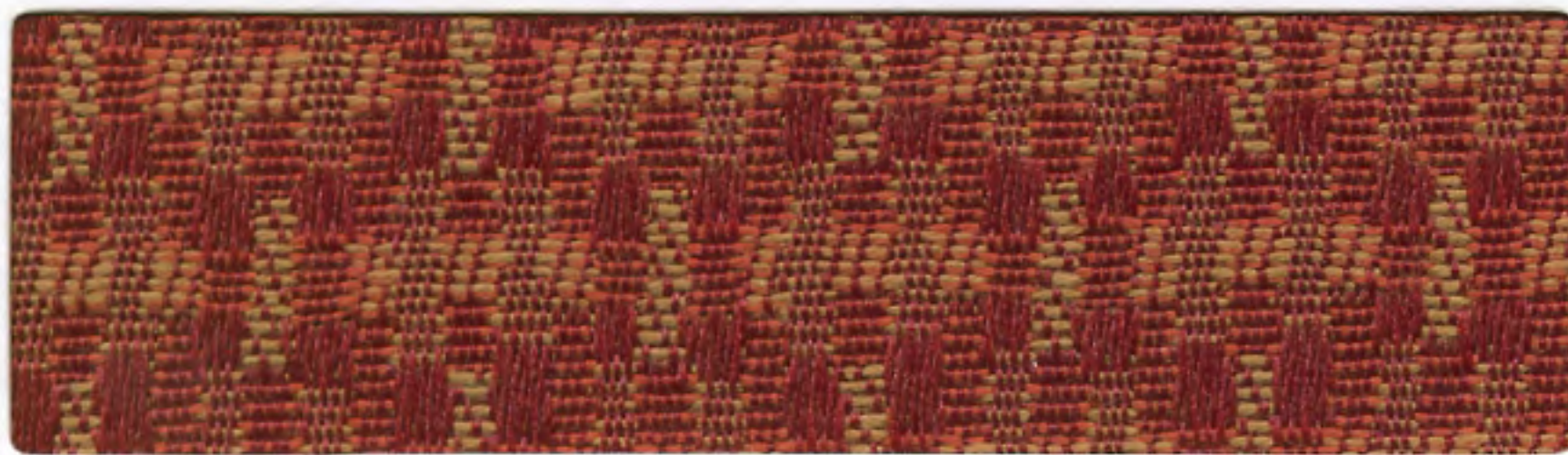


HAMLET POPPY



INSIGHT REAL RED



CANYON



BLOND



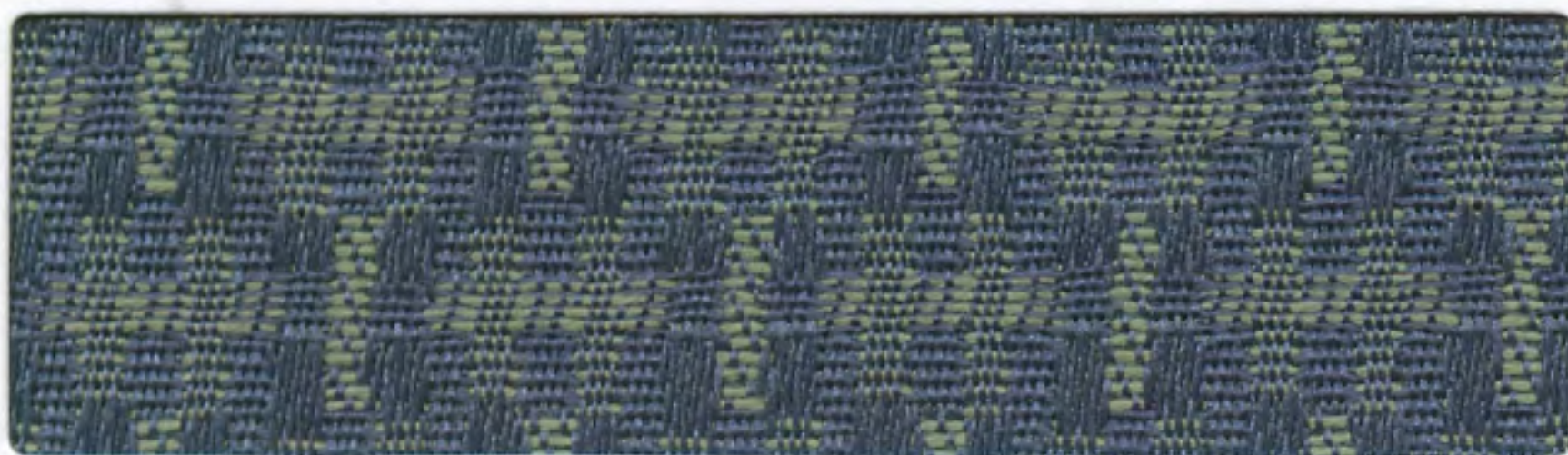
FOSSIL



PERIWINKLE



PORT



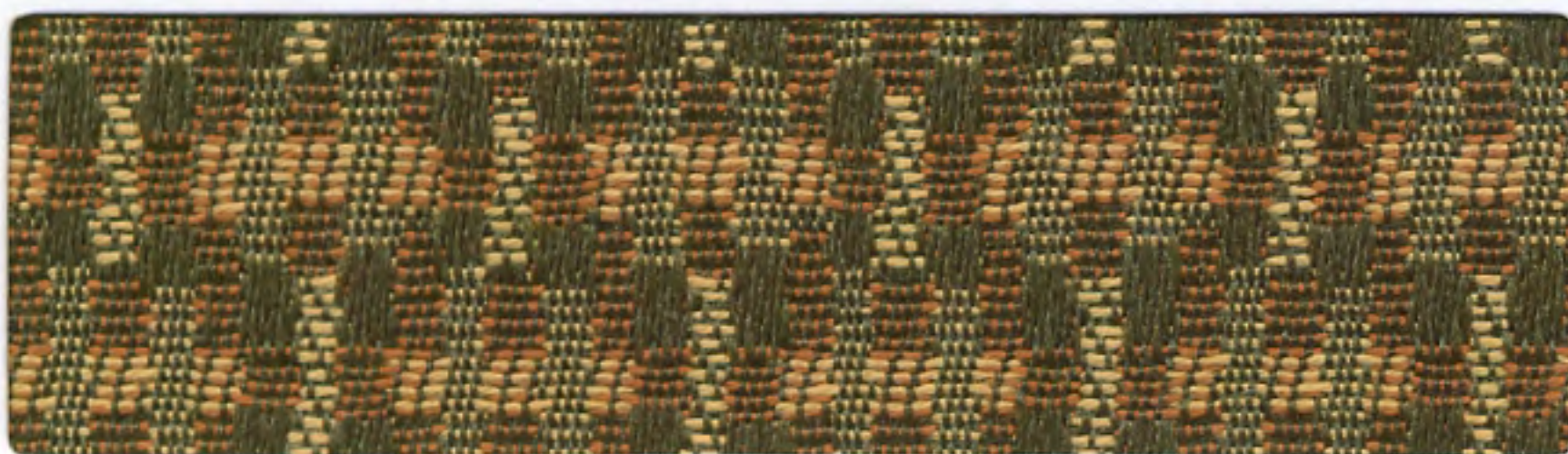
BAYVIEW



JADE



EGGPLANT



BOTANICAL



FAUNA



CONCORD



BRIARWOOD



FOREST



MIDNIGHT



LIBERTY





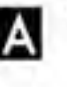







SUMMIT



EBONY

SPECIFICATIONS

54" - Pattern	Fiber Content	Abrasion (Wyzenbeek)	Light-fastness	Crocking	Pilling	Seam Slippage	Tensile Strength	Approx. Repeats	Cleaning Code
HAMLET     	59% Rayon, 41% Polyester Crypton® Finish	102,000 D.R. (cotton duck)	Class 4 40 Hrs.	Dry: Cl. 4.5 Wet: Cl. 4.5	Class 5	Warp: 53 Fill: 57	Warp: 219 Fill: 173	5/8" L, 5/8" W	W
INSIGHT     	100% Polyester Acrylic Backing Proprietary Stain Resistance	192,000 D.R. (cotton duck)	Class 5 40 Hrs.	Dry: Cl. 4.5 Wet: Cl. 4.5	Class 5	Warp: 90 Fill: 92	Warp: 265 Fill: 219	1/4" L, 1/2" W	WS

* ACT: Registered Certification Marks

icon upholstery definitions



Fire Retardancy

Flammability testing determines a fabric's resistance to burning. Passes Cal 117



Colorfastness To Wet & Dry Crocking

The rubbing off of color from the fabric onto clothing, hands, or other materials and can occur under wet or dry conditions. Passes AATCC 8-1974, Dry Crocking, Class 4 minimum, Wet Crocking, Class 3 minimum.



Colorfastness To Light

The degree to which fabric will retain its color when exposed to light. Passes AATCC 16A-1974 or AATCC 16E-1976. Class 4 minimum at 40 hours
Note: Class 4 minimum at 60 hours is recommended for direct sunlight exposure.



Physical Properties

Brush Pill Test to determine a fabric's pilling, Breaking/Tensile Strength Test determines the ability of a fabric to withstand tension without breaking or tearing. Seam Slippage Test determines the pulling apart of fabrics at the seams. Passes Brush Pill ASTM D3511, 3-4 minimum, Breaking Strength ASTM D3597-D1682-64 (1975) 50 lbs. minimum in warp & weft, Seam Slippage ASTM D3597-D434-75 25 lbs. minimum warp & weft.



Abrasion

The ability of a fabric to withstand damage from wear and rubbing. Passes Heavy Duty Contract ASTM 3597 modified (No. 10 cotton duck); 30,000 double rubs Wyzenbeek Method or ASTM 4966 modified (with 21 oz. wt.); 40,000 rubs Martindale Method.



memo samples

Memo samples are available. Please call Momentum at
800-366-6839 or visit www.memosamples.com

M O M E N T U M
T E X T I L E S